






# BONUS WEEKEND

-  Family / Combined activities
-  Young Adult 18+
-  Adults
-  High School 13-18yrs
-  Children 5-12yrs

## FRIDAY 10th

**7pm – 8pm**  
Family Vespers  
(Big Tent)

**7pm – 8pm**  
Evening  
Worship

**7pm – 8pm**  
Evening  
Worship

## SATURDAY 11th

**11am**  
Divine Service  
(Big Tent)

**11am**  
Church

**11am**  
Church

**3pm – 4:30pm**  
Men's &  
Women's  
gatherings

**3pm – 4:30pm**  
Afternoon  
hang out

**3pm – 4:30pm**  
Worship  
Challenge

**3pm – 4:30pm**  
Kid's Club

**8:30pm**  
Closing  
Sabbath  
(Amphitheatre)

**7pm**  
Closing  
Sabbath &  
Games

# BIG TENT (ADULTS)

RIVERS IN THE WILDERNESS

Adults

Family / Combined activities

	7:30 - 8:30am	9:00 - 10:15am	10:45am - 12:00pm	2:00 - 4:30pm	6:45 - 8:00pm	8:30 - 9:30pm				
SUN 12th		Registration		Registration / Fun on the Field		Cafe Tent				
MON 13th	7:30 - 8am Family Fitness <i>(Bball court)</i>  8 - 8:30am Prayer Meeting <i>(Big Tent)</i>	Workshops	Workshops	Workshop / Activities	Evening Worship	Cafe Tent				
TUE 14th			The Big Quiz <i>(Big Tent)</i>			Cafe Tent				
WED 15th			Workshops			Cafe Tent/ Family Sports <i>(Field)</i>				
THU 16th			Workshops			FAIR DAY	Cafe Tent			
FRI 17th			Workshop / Activities			Opening Sabbath <i>(Outdoor Amphitheatre)</i>				
SAT 18th			Prayer Meeting <i>(Big Tent)</i>			9:30am Sabbath School	11am Church	2-4pm Mission Spotlight	Concert	Closing Sabbath & Farewell <i>(Big Tent)</i>

# YOUNG ADULT (AGES 18+)

## WATER IN THE DROUGHT

■ Young Adult

■ Family / Combined activities

	7:30 - 8:30am	9:00 - 10:30am	10:30am - 12:00pm	2:00 - 5:00pm	7:00 - 8:30pm	8:30 - 9:30pm
SUN 12th		Registration		Registration / Fun on the Field		Evening Activities
MON 13th	7:30 - 8am Family Fitness <i>(Bball court)</i>  8 - 8:30am Prayer Meeting <i>(Big Tent)</i>	Deep Dive with Pr Kyle	Crucial Conversations <i>Managing Social Pressure</i>	Koinonia Fellowship <i>Blind Beach Volleyball</i>	Evening Worship	Evening Activities
TUE 14th			The Big Quiz <i>(Big Tent)</i>	Koinonia Fellowship <i>Tramping</i>		Evening Activities
WED 15th			Crucial Conversations <i>Cringy Christians</i>	Koinonia Fellowship <i>Build your own board game</i>		Family Sports <i>(Field)</i>
THU 16th			Crucial Conversations <i>Relative Truth?</i>	FAIR DAY		Evening Activities
FRI 17th			Crucial Conversations <i>Trauma &amp; Spiritual Health</i>	Koinonia Fellowship <i>Service Project</i>		Opening Sabbath <i>(Outdoor Amphitheatre)</i>
SAT 18th			Prayer Meeting <i>(Big Tent)</i>	10am Sabbath School		11am Church



# HIGH SCHOOL (AGES 13-18)

WAIT! THERE'S MORE...

High School

Family / Combined activities

	7:30 - 8:30am	9:00 - 9:30am	9:30 - 10:30am	10:30am - 12:00pm	2:00 - 5:00pm	7:00 - 8:30pm	8:30 - 9:30pm
SUN 12th				Registration	Registration / Fun on the Field		Cafe Tent
MON 13th	7:30 - 8am Family Fitness (Bball court)	Breakfast	Morning Worship & Real Talk	Morning Activity: Team Challenge	Offsite Activity Paddleboarding & Kayaking	Evening Worship	Cafe Tent
TUE 14th				The Big Quiz (Big Tent)	Offsite Activity Trampoline Park		Cafe Tent
WED 15th				Morning Activity: Team Challenge	Offsite Activity Climbing Wall		Family Sports (Field)
THU 16th				8 - 8:30am Prayer Meeting (Big Tent)	FAIR DAY		Cafe Tent
FRI 17th				Offsite Activity: Day Trip to Hanmer Springs	Offsite Activity: Day Trip to Hanmer Springs		Opening Sabbath (Outdoor Amphitheatre)
SAT 18th				Prayer Meeting (Big Tent)	Sabbath School		11am Church

# JUNIOR (AGES 10-12)

STEPPING UP IN THE SAND



Juniors



Family / Combined activities

	7:30 - 8:30am	9:00am - 12:00pm	2:00 - 5:00pm	7:00 - 8:30pm	8:30 - 9:30pm
<b>SUN</b> 12th		Registration	Registration / Fun on the Field		Cafe Tent
<b>MON</b> 13th		<i>Sign-in 8:50 - 9:00am by parent/guardian</i> <b>Morning Programme</b> <i>Sign-out 11:50am - 12:10pm by parent/guardian</i>	<i>Sign-in 1:50 - 2:00pm</i> <b>Onsite Activity</b> <i>Sign-out 4:45 - 5:15pm</i>	<i>6:45- 7pm</i> <i>Sign-in by parent/guardian</i>  <b>Evening Worship</b>  <i>8:20 - 8:30pm</i> <i>Sign-out by parent/guardian</i>	Cafe Tent
<b>TUE</b> 14th	7:30 - 8am Family Fitness (Bball court)	<i>Sign-in 8:50 - 9:00am</i> <b>Morning Programme</b> <i>Sign-out 10:00 - 10:20am</i>	<i>Sign-in 1:45 - 2:00pm</i> <b>Offsite Activity: Swimming</b> <i>Sign-out 4:45 - 5:15pm</i>		Cafe Tent
<b>WED</b> 15th		<i>8:50 - 9:00am</i> <i>Sign-in by parent/guardian</i>	<i>Sign-in 1:45 - 2:00pm</i> <b>Offsite Activity: Jump Park</b> <i>Sign-out 4:45 - 5:15pm</i>		Family Sports (Field)
<b>THU</b> 16th	8 - 8:30am Prayer Meeting (Big Tent)	<b>Morning Programme</b>	FAIR DAY		Cafe Tent
<b>FRI</b> 17th		<i>11:50am - 12:10pm</i> <i>Sign-out by parent/guardian</i>	<i>Sign-in 1:50 - 2:00pm</i> <b>Onsite Activity</b> <i>Sign-out 4:45 - 5:15pm</i>		Opening Sabbath (Outdoor Amphitheatre)
<b>SAT</b> 18th	Prayer Meeting (Big Tent)	<i>9:15 - 9:30am Sign-in by parent/guardian</i> <b>Sabbath School &amp; Church</b> <i>12:00 - 12:15pm Sign-out by parent/guardian</i>			Concert (Big Tent)



# PRIMARY (AGES 6-9)

DEEP DIVE: SWIMMING THROUGH THE GOSPEL OF JOHN



Primary



Family / Combined activities

	7:30 - 8:30am	9:00am - 12:00pm	
<b>SUN</b> 12th		Registration	
<b>MON</b> 13th		<i>Sign-in 8:50 - 9:00am by parent/guardian</i> <b>Morning Programme</b> <i>Sign-out 11:50am - 12:10pm by parent/guardian</i>	
<b>TUE</b> 14th	7:30 - 8am Family Fitness (Bball court)	<i>Sign-in 8:50 - 9:00am</i> <b>Morning Programme</b> <i>Sign-out 10:00 - 10:20am</i>	10:30am - 12pm <b>The Big Quiz</b> (Big Tent)
<b>WED</b> 15th		8:50 - 9:00am <i>Sign-in by parent/guardian</i>	
<b>THU</b> 16th	8 - 8:30am Prayer Meeting (Big Tent)	<b>Morning Programme</b>	
<b>FRI</b> 17th		11:50am - 12:10pm <i>Sign-out by parent/guardian</i>	
<b>SAT</b> 18th	Prayer Meeting (Big Tent)	9:15 - 9:30am <i>Sign-in by parent/guardian</i> <b>Sabbath School &amp; Church</b> 12:00 - 12:15pm <i>Sign-out by parent/guardian</i>	

2:00 - 4:30pm	7:00 - 8:30pm	8:30 - 9:30pm
Registration / Fun on the Field		Cafe Tent
1:50 - 2:10pm <i>Sign-in by parent/guardian</i>	6:45 - 7:00pm <i>Sign-in by parent/guardian</i>	Cafe Tent
<b>Afternoon Programme</b>	<b>Evening Worship</b>	Cafe Tent
4:20 - 4:30pm <i>Sign-out by parent/guardian</i>		Family Sports (Field)
<b>FAIR DAY</b>		Cafe Tent
1:50 - 2:10pm <i>Sign-in</i> <b>Afternoon Programme</b> <i>Sign-out 4:20 - 4:30pm</i>	8:20 - 8:30pm <i>Sign-out by parent/guardian</i>	Opening Sabbath (Outdoor Amphitheatre)
	Concert (Big Tent)	Closing Sabbath & Farewell (Big Tent)

# KINDY (AGES 0-5)

GALACTIC QUEST: INVESTIGATING GOD'S WORD

Kindy Big Tent Family / Combined activities

	9:00am - 12:00pm	
SUN 12th	Registration	
MON 13th	Morning Programme	
TUE 14th		
WED 15th		
THU 16th		
FRI 17th		
SAT 18th	9:15 - 9:30am Sign-in Sabbath School 10:30 - 11:00am Sign-out	11am Church

	2:00 - 4:30pm		6:45 - 8:00pm	8:30 - 9:30pm
	Registration / Fun on the Field		Evening Worship	Cafe Tent
	1:50 - 2:20pm Sign-in by parent/guardian			Cafe Tent
	Afternoon Programme			Cafe Tent
	4:00 - 4:30pm Sign-out by parent/guardian			Cafe Tent / Family Sports (Field)
	FAIR DAY			Cafe Tent
	1:50 - 2:20pm Sign-in Afternoon Programme 4:00 - 4:30pm Sign-out			Opening Sabbath (Outdoor Amphitheatre)
			Concert (Big Tent)	Closing Sabbath & Farewell (Big Tent)

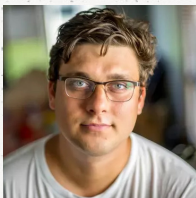


# GUEST SPEAKERS



BIG TENT

Pastor John Bradshaw is the president of the television show *It Is Written*. A former radio broadcaster, he became a Christian as a young adult, and served as an evangelist and church pastor before joining *It Is Written* in January of 2011. He has held more than 100 evangelistic series, sharing God's word on six continents. John is married to Melissa, and they have two children. John is originally from New Zealand, and now lives with his family in Chattanooga, Tennessee.



YOUNG ADULTS

Pr Boris Jovinov is a pastor at Murwillumbah SDA Church in Australia, where he lives with his wife Marlena and their four children. He has a passion for ministry and seeing people make eternal decisions for Jesus. Boris has described himself as a "pew-warmer" until God became real in his life and he developed a relationship with Him on a personal level. He has been involved in evangelism and mission work around the world. In his spare time Boris likes to bird-watch and breed chickens that lay different coloured eggs.



HIGH SCHOOL

Kofi Amoah hails from the West-African country of Ghana, but grew up in Canada. He currently lives in Palmerston North, where he serves as the chaplain of Longburn Adventist College. He has worked with teenagers and young adults in various capacities inside and outside of church and enjoys connecting with them and helping them grow in their walk with Jesus. His great desire is to help teens see God as real, loving, and relevant to them.



JUNIORS

Pr Tulaga Aiolupotea has served as a Bible Worker, Minister and School Chaplain. He has a passion for creative ministries and young people combined with a deep love for the gospel. Tulaga is currently the pastor of Invercargill Church and the Chaplain for Southland Adventist Christian School. He currently lives in Invercargill with his wife Vineta and their five children. Vineta is a teacher at SACS and will also be helping out in Juniors.



PRIMARY

Pr Tinus de Nysschen has recently moved from South Africa with his wife Elize and their two boys, to become the new lead pastor at Bishopdale Church in Christchurch. Pr Tinus has an active, faithful and obedient relationship with Jesus, a genuine love for people, and great passion for discipleship and evangelism. He is also a handyman and a trained plumber, and is training up to be our Camp Superintendent.

# CAMP EVENTS

## THE BIG QUIZ | TUESDAY 10:30AM - 12PM

Come along to the Big Tent to enjoy fun and fellowship across all generations! Bible and general knowledge questions will be contributed by all the division leaders so that all ages will get the chance to shine. There will be no winners or losers but lots of prizes up for grabs!

## FAMILY SPORTS NIGHT | WEDNESDAY 8:30PM

On Wednesday evening after the division programmes, sports will be held on the basketball court and sports field. Touch, basketball, soccer and Frisbee Golf. Whether a beginner or a professional, we invite you to come along and give it a go!

## FAIR DAY | THURSDAY 12PM - 4PM

Food, fun activities, market stalls, jumping castles, games, a petting zoo, and more - this Fair Day has something for everyone! Come to the field to enjoy an afternoon filled with laughter, connection, adventure, and fun.

## FAMILY FITNESS | MONDAY - FRIDAY 7:30AM

A big part of health is getting some movement in every day! Join Svetlana on the Basketball Court with friends and family each morning, to start the day energised!

## OPENING SABBATH | FRIDAY 8:30PM

Come to the amphitheatre to welcome in the precious Sabbath hours with our whole Camp family. With music, prayer and testimony, this will be a blessed time of connection with each other and our God.

## PRAYER MEETING | SABBATH 7:30AM

There is power when we unite in prayer and what a blessing it is when we come before the Lord with others. This is a time to intentionally seek each other out to connect, share and talk with God.

## CONCERT | SATURDAY 6:30PM

Come along to be treated to a concert by One Glory - a music ministry dedicated to writing and sharing music that reflects the beauty of life in the light of God's love. Jade and Adriana Wales of One Glory are a husband and wife team from Australia. In their own words, "we want our music not just to reach Christians, but people that haven't yet met God in all His beauty. As music is a beautiful and essential part of worshipping our Creator, our aim is to uncover and share sacred, godly music that inspires others with a true knowledge of God, and in turn leads them to praise Him."

